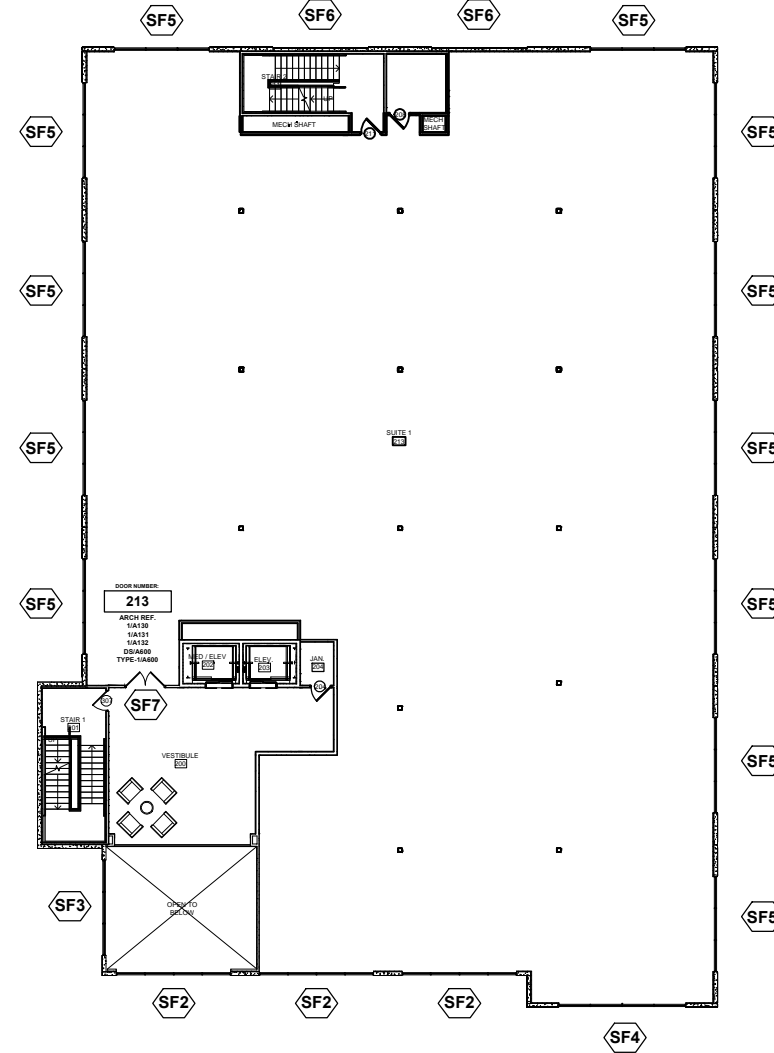


**FLOOR PLAN 1 LEVEL 1**

SCALE: NTS  
 ARCH REF: 1/A130  
 1/A131  
 1/A132  
 1-2/A200  
 1-2/A201  
 1-6/A310

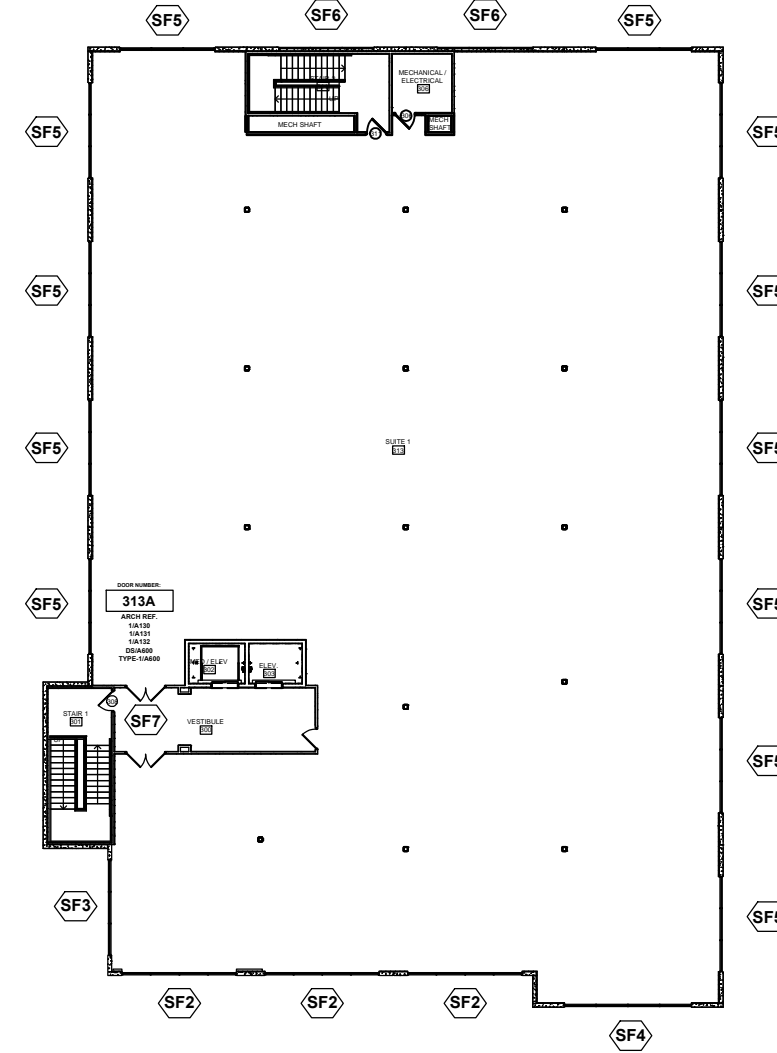
**GLASS WALL SYSTEM(S):**  
 OLDCASTLE FG3000 THERMAL ALUMINUM STOREFRONT FRAMING SYSTEM  
 OLDCASTLE FG2000 ALUMINUM STOREFRONT FRAMING SYSTEM  
 OLDCASTLE RELIANCE 2 1/2" VENEER CURTAIN WALL  
 OLDCASTLE WS500 STANDARD WIDE STILE DOOR ENTRANCE  
 OLDCASTLE NS212 STANDARD NARROW STILE DOOR ENTRANCE



**FLOOR PLAN 2 LEVEL 2**

SCALE: NTS  
 ARCH REF: 1/A130  
 1/A131  
 1/A132  
 1-2/A200  
 1-2/A201  
 1-6/A310

**GLASS WALL SYSTEM(S):**  
 OLDCASTLE FG3000 THERMAL ALUMINUM STOREFRONT FRAMING SYSTEM  
 OLDCASTLE FG2000 ALUMINUM STOREFRONT FRAMING SYSTEM  
 OLDCASTLE RELIANCE 2 1/2" VENEER CURTAIN WALL  
 OLDCASTLE WS500 STANDARD WIDE STILE DOOR ENTRANCE  
 OLDCASTLE NS212 STANDARD NARROW STILE DOOR ENTRANCE



**FLOOR PLAN 3 LEVEL 3**

SCALE: NTS  
 ARCH REF: 1/A130  
 1/A131  
 1/A132  
 1-2/A200  
 1-2/A201  
 1-6/A310

**GLASS WALL SYSTEM(S):**  
 OLDCASTLE FG3000 THERMAL ALUMINUM STOREFRONT FRAMING SYSTEM  
 OLDCASTLE FG2000 ALUMINUM STOREFRONT FRAMING SYSTEM  
 OLDCASTLE RELIANCE 2 1/2" VENEER CURTAIN WALL  
 OLDCASTLE WS500 STANDARD WIDE STILE DOOR ENTRANCE  
 OLDCASTLE NS212 STANDARD NARROW STILE DOOR ENTRANCE

NO.	DATE	DESCRIPTION
1	04/12/20	First Submittal
2	04/14/20	Revision to Plans, Elev., & Details for Updated Plans
2	04/15/20	Corrections to First Submittal

**SIX FLAGS GLASS**  
 108 E AIRLINE RD VICTORIA, TX 77901  
 (W) 361-573-9612 (F) 361-573-2334

PROJECT: VICTORIA MEDICAL OFFICE BUILDING (MOB)  
**NEW SHELL BUILDING**  
 ARCHITECT: GOREE ARCHITECTS  
 (713) 960-6102  
 GENERAL CONTRACTOR: WEAVER & JACOBS CONSTRUCTORS, INC.  
 (817) 277-9800

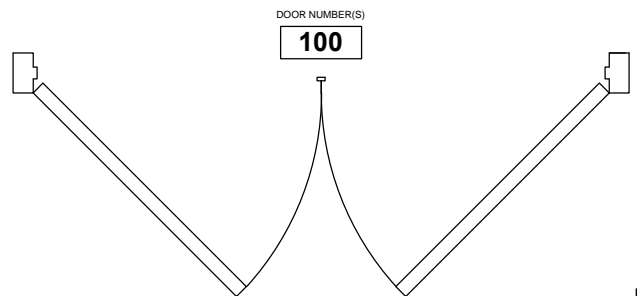
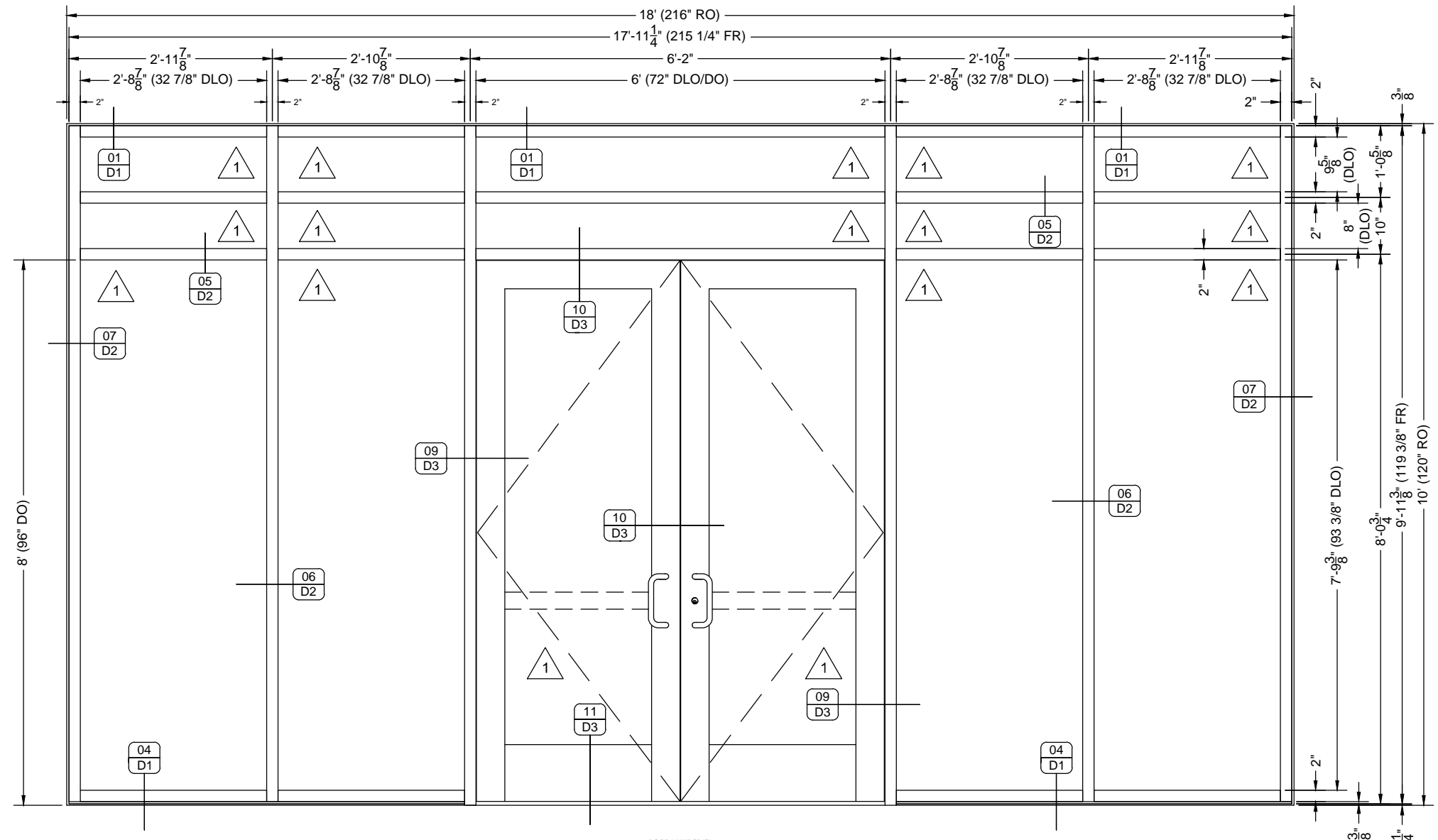
PROJECT NO.  
**SFG-1904-06**

DRAWN BY: fp DATE: 04/15/20

SCALE: NTS

DRAWING: FLOOR PLANS

SHEET: P1



**ELEVATION**

QUANTITY: 01  
 SCALE: 1/2" = 1'-0"  
 ARCH REF: 1/A130  
 1/A131  
 1/A132  
 1/A201  
 1/A310  
 DS/A600  
 TYPE 1A/A600  
 DOOR NUMBER(S): 100



**STOREFRONT**

OLDCASTLE FG3000 THERMAL ALUMINUM  
 STOREFRONT FRAMING SYSTEM  
 OLDCASTLE WS500 STANDARD WIDE STILE DOOR  
 ENTRANCE

**HARDWARE: SPECIFICATION  
 EXTERIOR DOORS**

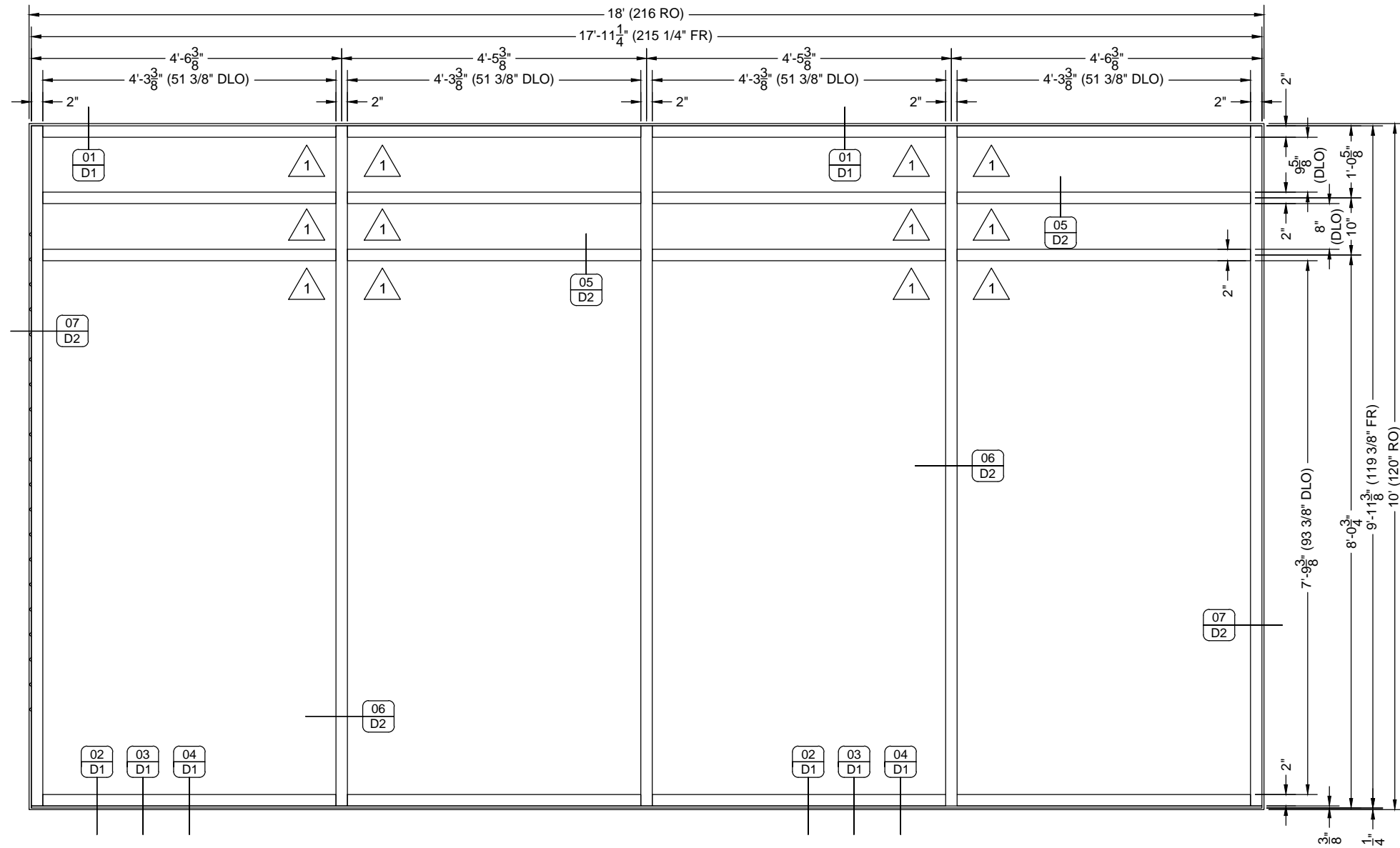
#	Exterior Doors	Description	Finish	OBE Part #
2	Drop Plate	LCN 4040-18 Drop Plate	Clear	4997
2	Closer	LCN 4040 Surface Closer	Clear	6578
2	Panic Device	Touchbar Rim Panic, 36"	Clear	12510
2	Strike	Included with Rim Panic	Clear	
1	Active Panic Exterior Trim	CY-5 1-5/32" Diameter Rim Cylinder	Clear	198
1	Removable Mullion	RM-170 Removable Mullion, 8"	Clear	12492
2	Door Pulls	PH-21 Standard Panic Pull	Clear	12368
2	Gear Inset Hinge Part	CFM95HD Hinge w/ Screws	Clear	9882
2	Sweep	V-231 Aluminum Weatherstrip for Door Bottom Rail with Wool Roper	Clear	4299
1	Threshold	TH-43 4" Standard Threshold	Mill	TH43M184

SUB	BY	DATE	DESCRIPTION
2	fp	04/15/20	Corrections to First Submittal
2	fp	04/14/20	Revision to Plans, Elev., & Details for Updated Plans
1	fp	04/12/20	First Submittal

**SIX FLAGS GLASS**  
 108 E AIRLINE RD VICTORIA, TX 77901  
 (W) 361-573-9612 (F) 361-573-2334

PROJECT: VICTORIA MEDICAL OFFICE BUILDING (MOB)  
**NEW SHELL BUILDING**  
 ARCHITECT: GOREE ARCHITECTS  
 (713) 660-6102  
 GENERAL CONTRACTOR: WEAVER & JACOBS CONSTRUCTORS, INC.  
 (867) 277-9680

PROJECT NO. <b>SFG-1904-06</b>	
DRAWN BY <b>fp</b>	DATE <b>04/15/20</b>
SCALE 1/2" = 1'-0"	
DRAWING <b>ELEVATIONS</b>	
SHEET <b>E1</b>	



**ELEVATION**

QUANTITY: 08  
 SCALE: 1/2" = 1'-0"  
 ARCH REF: 1/A130  
 2/A131  
 3/A132  
 1/A201  
 2/A310



**STOREFRONT**

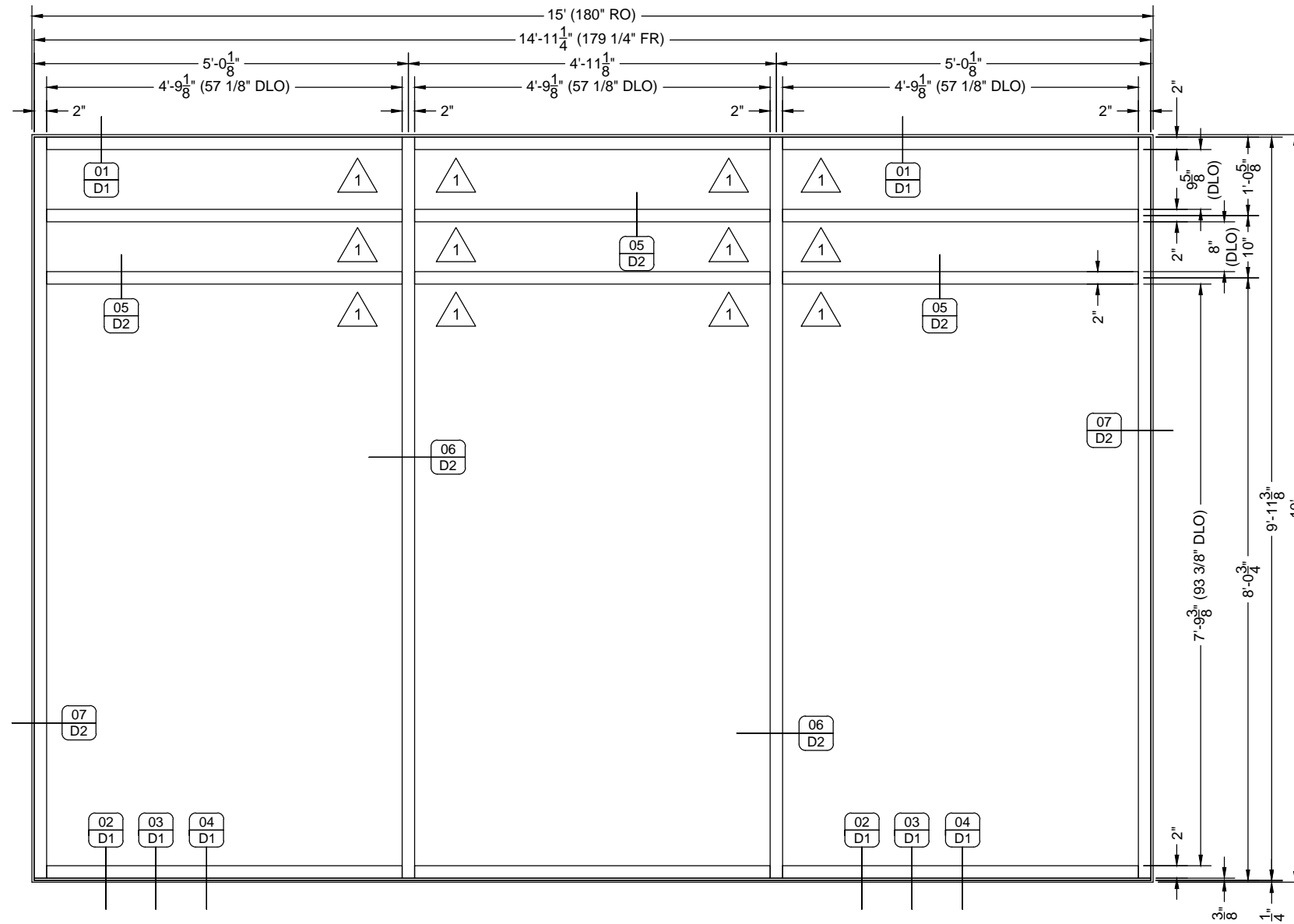
OLDCASTLE FG3000 THERMAL ALUMINUM  
 STOREFRONT FRAMING SYSTEM

SUB	BY	DATE	DESCRIPTION
2	fp	04/15/20	Corrections to First Submittal
2	fp	04/14/20	Revision to Plans, Elev., & Details for Updated Plans
1	fp	04/12/20	First Submittal

**SIX FLAGS GLASS**  
 108 E AIRLINE RD VICTORIA, TX 77901  
 (W) 361-573-9612 (F) 361-573-2334

PROJECT: VICTORIA MEDICAL OFFICE BUILDING (MOB)  
**NEW SHELL BUILDING**  
 ARCHITECT: GOREE ARCHITECTS  
 (713) 660-6102  
 GENERAL CONTRACTOR: WEAVER & JACOBS CONSTRUCTORS, INC.  
 (867) 277-9680

PROJECT NO. <b>SFG-1904-06</b>	
DRAWN BY <b>fp</b>	DATE <b>04/15/20</b>
SCALE 1/2" = 1'-0"	
DRAWING ELEVATIONS	
SHEET <b>E2</b>	



**ELEVATION**

QUANTITY: 03  
 SCALE: 1/2" = 1'-0"  
 ARCH REF: 1/A130  
 1/A131  
 1/A132  
 2/A201  
 3/A310



**STOREFRONT**

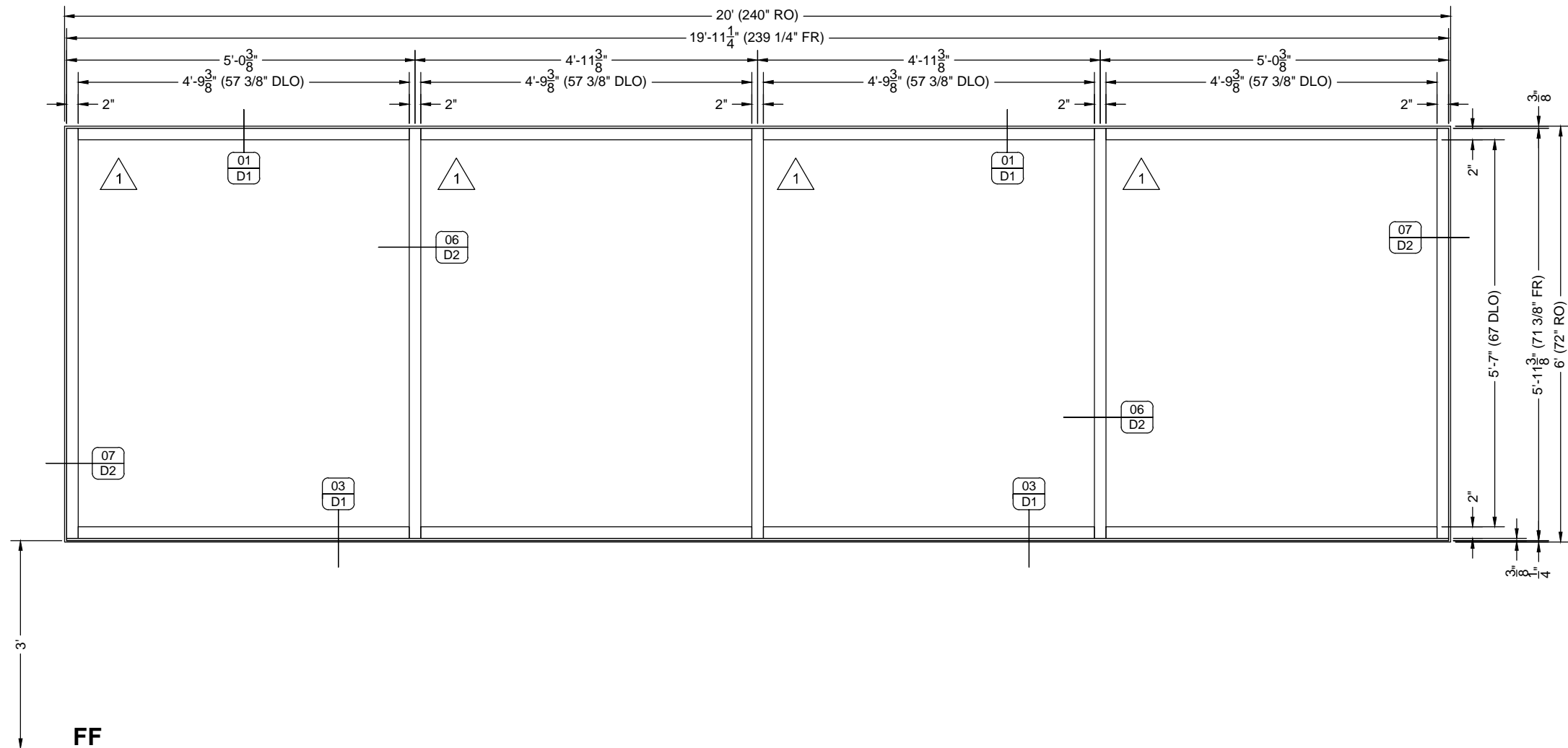
OLDCASTLE FG3000 THERMAL ALUMINUM  
 STOREFRONT FRAMING SYSTEM

SUB	BY	DATE	DESCRIPTION
2	fp	04/15/20	Corrections to First Submittal
2	fp	04/14/20	Revision to Plans, Elev., & Details for Updated Plans
1	fp	04/12/20	First Submittal

**SIX FLAGS GLASS**  
 108 E AIRLINE RD VICTORIA, TX 77901  
 (W) 361-573-9612 (F) 361-573-2334

PROJECT: VICTORIA MEDICAL OFFICE BUILDING (MOB)  
**NEW SHELL BUILDING**  
 ARCHITECT: GOREE ARCHITECTS  
 (713) 660-6102  
 GENERAL CONTRACTOR: WEAVER & JACOBS CONSTRUCTORS, INC.  
 (361) 577-9630

PROJECT NO.		SFG-1904-06
DRAWN BY	DATE	
fp	04/15/20	
SCALE		1/2" = 1'-0"
DRAWING		ELEVATIONS
SHEET		E3



**ELEVATION**

QUANTITY: 03  
 SCALE: 1/2" = 1'-0"  
 ARCH REF: 1/A130  
 1/A131  
 1/A132  
 1/A201  
 4/A310

**SF4 STOREFRONT**

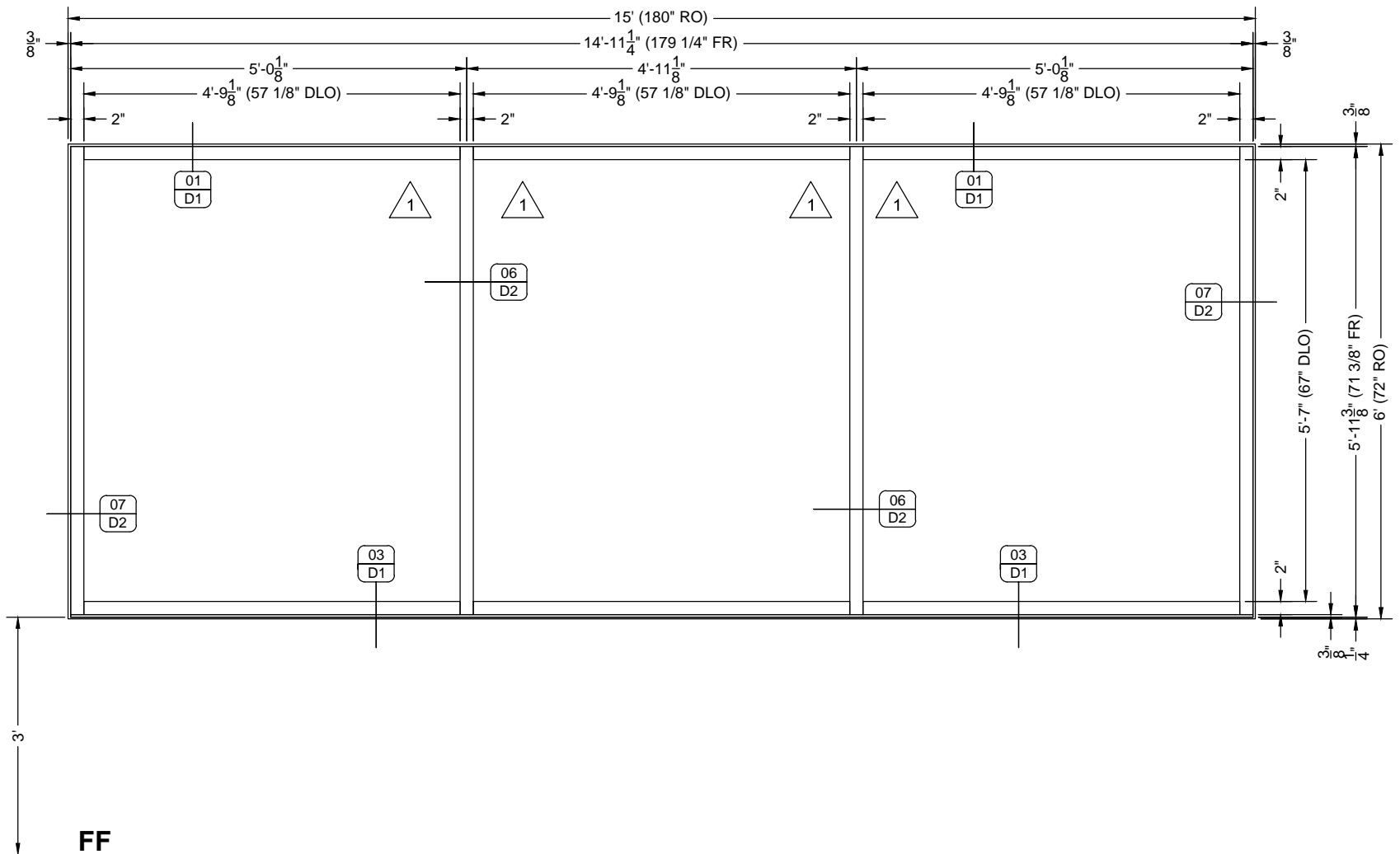
OLDCASTLE FG3000 THERMAL ALUMINUM  
 STOREFRONT FRAMING SYSTEM

NO.	DATE	DESCRIPTION
2	04/15/20	fp Corrections to First Submittal
2	04/14/20	fp Revision to Plans, Elev., & Details for Updated Plans
1	04/12/20	fp First Submittal

**SIX FLAGS GLASS**  
 108 E AIRLINE RD VICTORIA, TX 77901  
 (W) 361-573-9612 (F) 361-573-2334

PROJECT: VICTORIA MEDICAL OFFICE BUILDING (MOB)  
**NEW SHELL BUILDING**  
 ARCHITECT: GOREE ARCHITECTS  
 (713) 660-6102  
 GENERAL CONTRACTOR: WEAVER & JACOBS CONSTRUCTORS, INC.  
 (867) 277-9680

PROJECT NO. <b>SFG-1904-06</b>	
DRAWN BY <b>fp</b>	DATE <b>04/15/20</b>
SCALE 1/2" = 1'-0"	
DRAWING <b>ELEVATIONS</b>	
SHEET <b>E4</b>	



**ELEVATION**

- QUANTITY: 36  
 SCALE: 1/2" = 1'-0"  
 ARCH REF: 1/A130  
 1/A131  
 1/A132  
 1/A200  
 2/A200  
 2/A201  
 5/A310



**STOREFRONT**

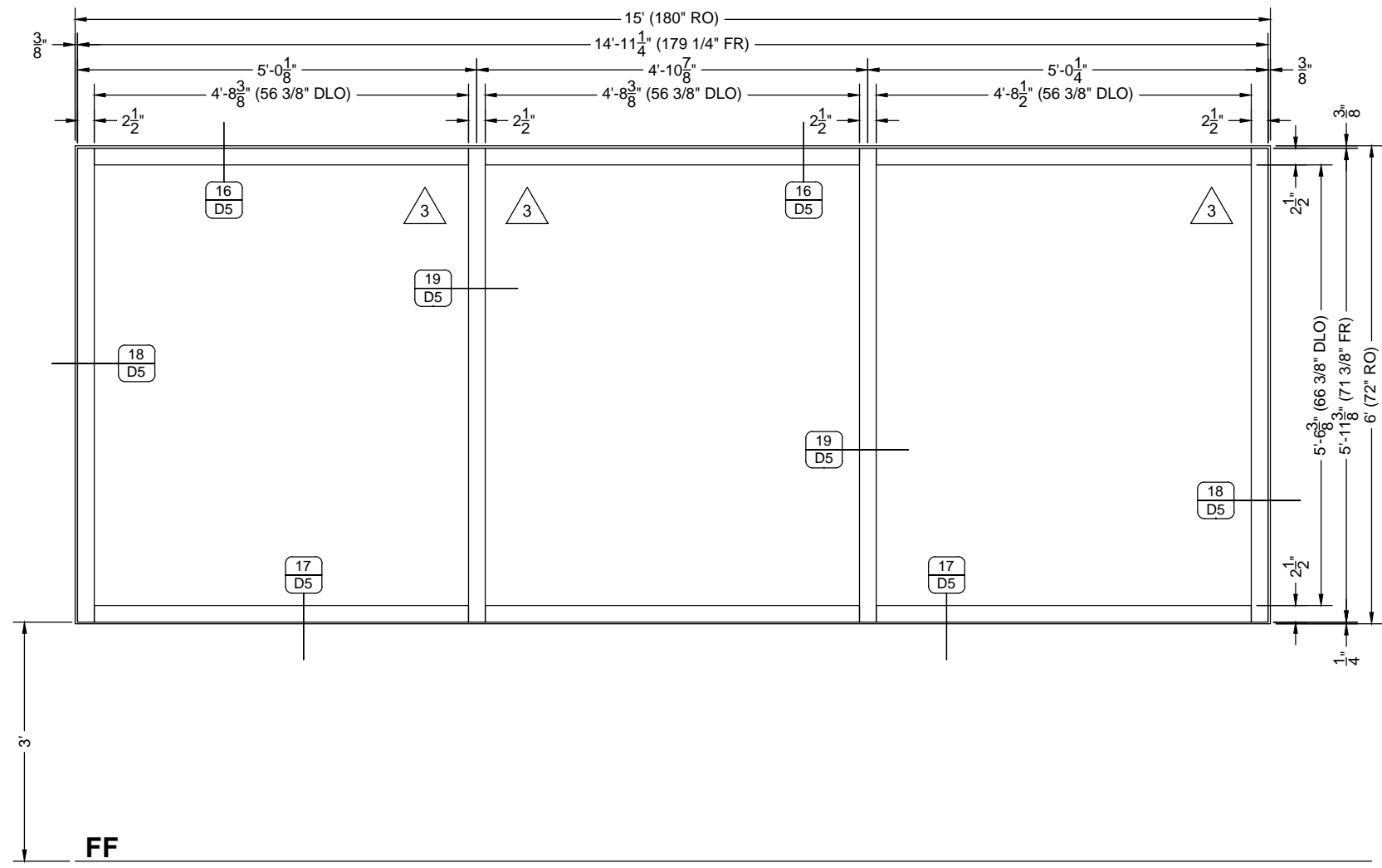
OLDCASTLE FG3000 THERMAL ALUMINUM STOREFRONT FRAMING SYSTEM

SUB	BY	DATE	DESCRIPTION
2	fp	04/15/20	Corrections to First Submittal
2	fp	04/14/20	Revision to Plans, Elev., & Details for Updated Plans
1	fp	04/12/20	First Submittal

**SIX FLAGS GLASS**  
 108 E AIRLINE RD VICTORIA, TX 77901  
 (W) 361-573-9612 (F) 361-573-2334

PROJECT: VICTORIA MEDICAL OFFICE BUILDING (MOB)  
**NEW SHELL BUILDING**  
 ARCHITECT: GOREE ARCHITECTS  
 (713) 660-6102  
 GENERAL CONTRACTOR: WEAVER & JACOBS CONSTRUCTORS, INC.  
 (361) 577-9680

PROJECT NO.		SFG-1904-06
DRAWN BY	DATE	
fp	04/15/20	
SCALE		1/2" = 1'-0"
DRAWING		ELEVATIONS
SHEET		E5



**ELEVATION**  
 QUANTITY: 04  
 SCALE: 1/2" = 1'-0"  
 ARCH REF: 1/A131  
 2/A132  
 1/A200  
 6/A310

**SF6 VENEER CURTAIN WALL**  
 OLDCASTLE RELIANCE 2 1/2" VENEER CURTAIN WALL

NO.	DATE	DESCRIPTION
2	04/15/20	Corrections to First Submittal
2	04/14/20	Revision to Plans, Elev., & Details for Updated Plans
1	04/12/20	First Submittal

**SIX FLAGS GLASS**  
 108 E AIRLINE RD VICTORIA, TX 77901  
 (W) 361-573-9612 (F) 361-573-2334

PROJECT: VICTORIA MEDICAL OFFICE BUILDING (MOB)  
**NEW SHELL BUILDING**  
 ARCHITECT: GOREE ARCHITECTS  
 (713) 660-6102  
 GENERAL CONTRACTOR: WEAVER & JACOBS CONSTRUCTORS, INC.  
 (867) 277-9680

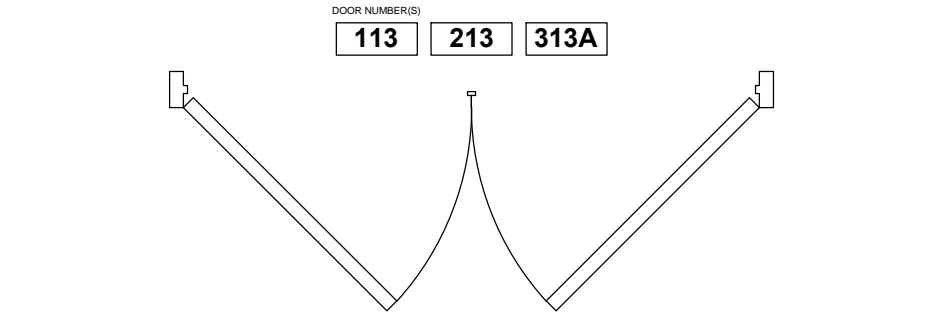
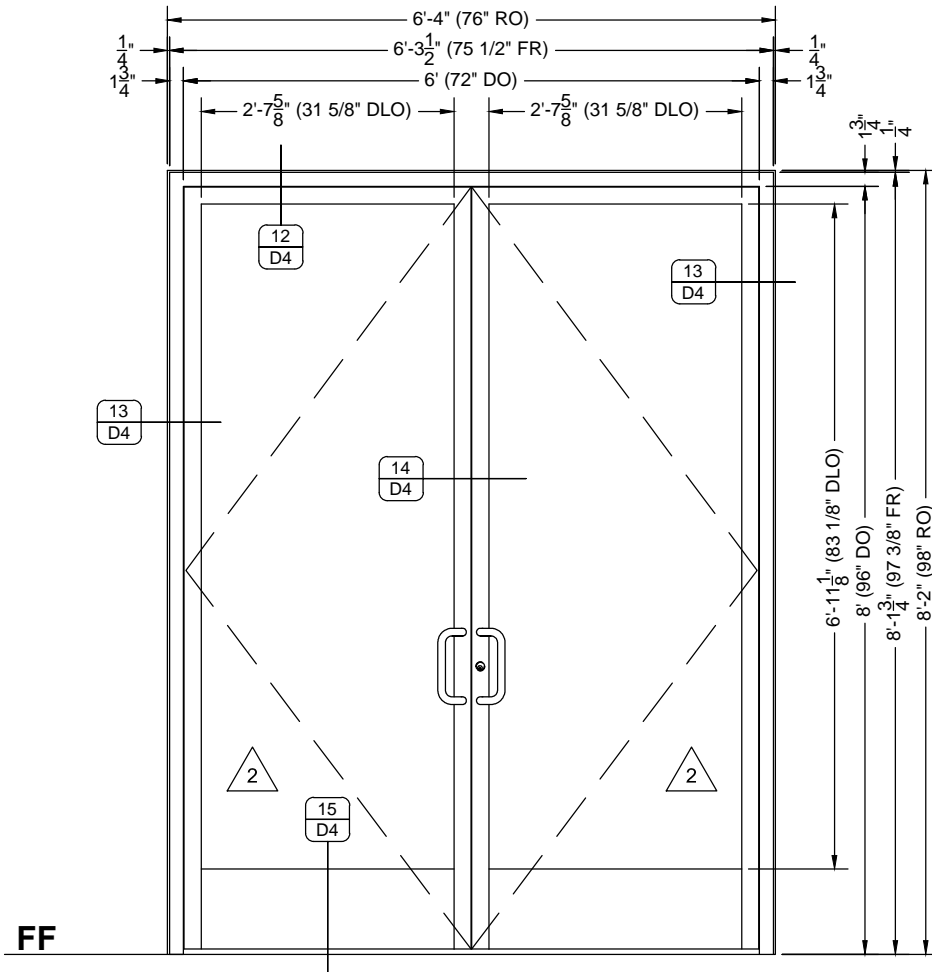
PROJECT NO.		SFG-1904-06
DRAWN BY	DATE	
fp	04/15/20	
SCALE		1/2" = 1'-0"
DRAWING		ELEVATIONS
SHEET		E6

NO.	DATE	DESCRIPTION
2	04/15/20	Corrections to First Submittal
2	04/14/20	Revision to Plans, Elev., & Details for Updated Plans
1	04/17/20	First Submittal

**SIX FLAGS GLASS**  
 108 E AIRLINE RD VICTORIA, TX 77901  
 (W) 361-573-9612 (F) 361-573-2334

PROJECT: VICTORIA MEDICAL OFFICE BUILDING (MOB)  
**NEW SHELL BUILDING**  
 ARCHITECT: GOREE ARCHITECTS  
 (713) 660-6102  
 GENERAL CONTRACTOR: WEAVER & JACOBS CONSTRUCTORS, INC.  
 (867) 577-9680

PROJECT NO.	SFG-1904-06
DRAWN BY	fp
DATE	04/15/20
SCALE	1/2" = 1'-0"
DRAWING	ELEVATIONS
SHEET	E7



**ELEVATION** **SF7** **INT ENTRANCE**  
 QUANTITY: 03  
 SCALE: 1/2" = 1'-0"  
 ARCH REF: 1/A130  
 1/A131  
 1/A132  
 DS/A600  
 TYPE-1A/A600

OLDCASTLE FG2000 ALUMINUM STOREFRONT FRAMING SYSTEM  
 OLDCASTLE NS212 STANDARD NARROW STILE DOOR ENTRANCE

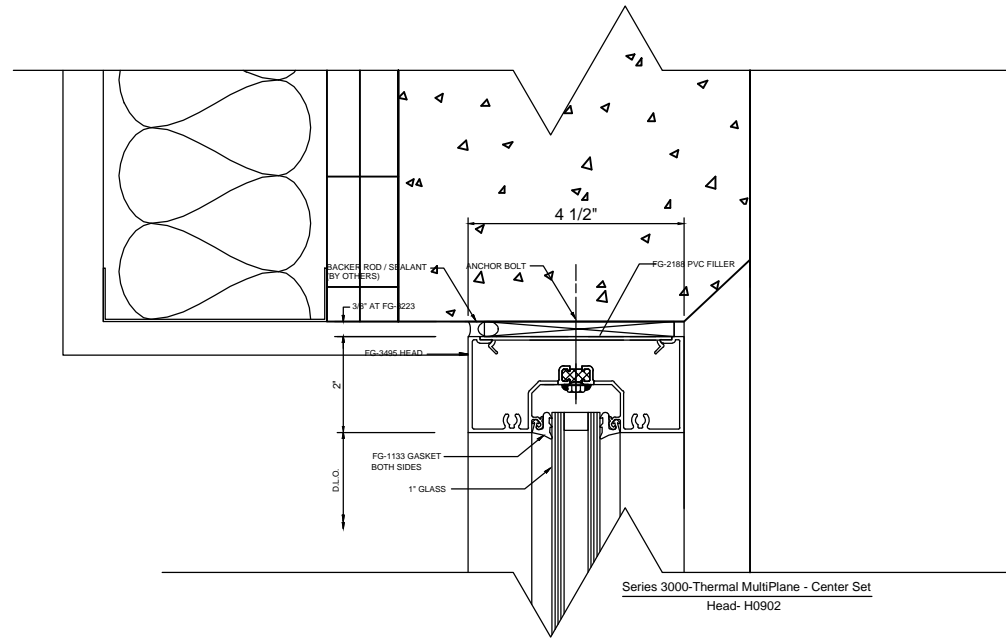
**HARDWARE: SPECIFICATION INTERIOR DOORS**

#	Interior Doors	Description	Quantity	Finish	OBE Part #
6	Drop Plate	Falcon SMC-DP Drop Plate	1 per Door Leaf	Clear	1286
6	Closer	Falcon SMC-100 Surface Closer with Backcheck	1 per Door Leaf	Clear	1280
3	Dead Lock Exterior Trim	CY-1 1-5/32" Diameter Standard Cylinder	1 per Active Door Leaf	Clear	184
3	Dead Lock Interior Trim	CY-1 1-5/32" Diameter Standard Cylinder	1 per Active Door Leaf	Clear	184
3	Dead Lock Part	Adams Rite 1850 MS Hook Bolt Lock with FP-1 Faceplate	1 per Active Door Leaf	Clear	1345
6	Flush Bolts	FB-14 Round Faced Flush Bolts	2 per Inactive Door Leaf	Clear	345
6	Door Pulls	PH-20 Standard Pull	1 per Door Leaf	Clear	12660
6	Door Push Bar	PB-21 Standard Push, 36"	1 per Door Leaf	Clear	126621
8	Butt Hinge	BH-1 4.5" x 4" Butt Hinge	3 per Door Leaf	Clear	155
3	Threshold	TH-43 4" Standard Threshold	1 per Pair of Doors	Mill	TH43M184

**ELEVATION** **MR1** **MIRROR**  
 QUANTITY: 02  
 SCALE: 1/2" = 1'-0"  
 ARCH REF: 1/A120  
 1/A410  
 2/A410  
 3/A410

RESTROOM MIRRORS





**DETAIL**

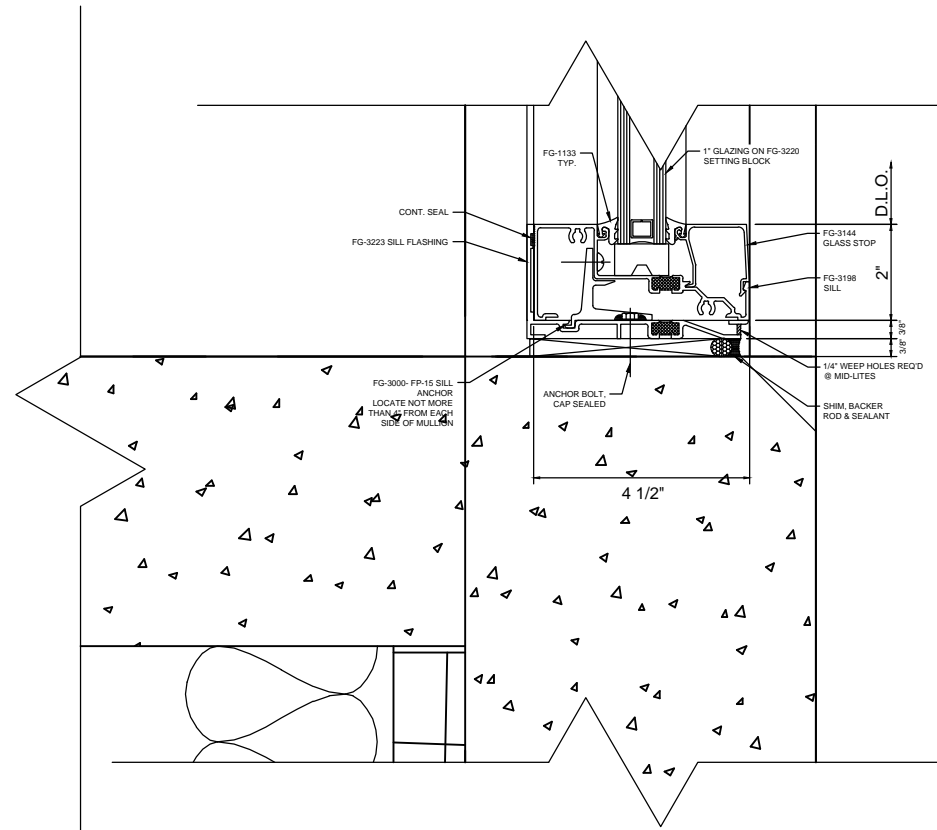
**01**

**EXT HEAD**

SCALE: 3" = 1'-0"  
 ARCH REF: 1/A130  
 1/A131  
 1/A132  
 2/A300  
 5/A300  
 6/A510

**GLASS WALL SYSTEM TYPE:**

OLDCASTLE FG3000 SERIES, 2" X 4 1/2"  
 THERMAL MULTIPLANE CENTER SET  
 ALUMINUM STOREFRONT FRAMING SYSTEM



**DETAIL**

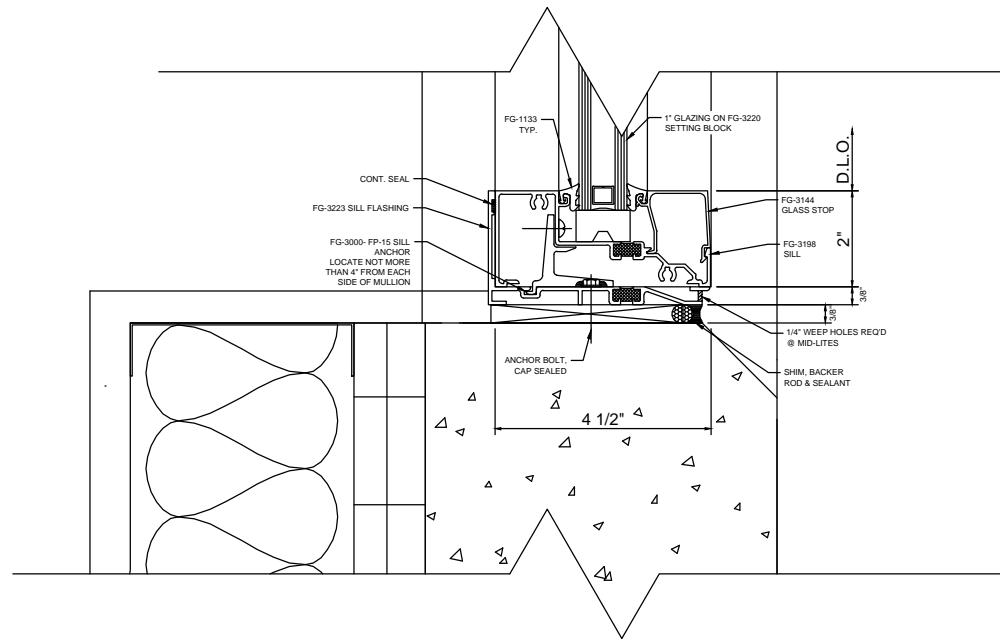
**02**

**EXT SILL**

SCALE: 3" = 1'-0"  
 ARCH REF: 1/A130  
 1/A131  
 1/A132  
 5/A300

**GLASS WALL SYSTEM TYPE:**

OLDCASTLE FG3000 SERIES, 2" X 4 1/2"  
 THERMAL MULTIPLANE CENTER SET  
 ALUMINUM STOREFRONT FRAMING SYSTEM



**DETAIL**

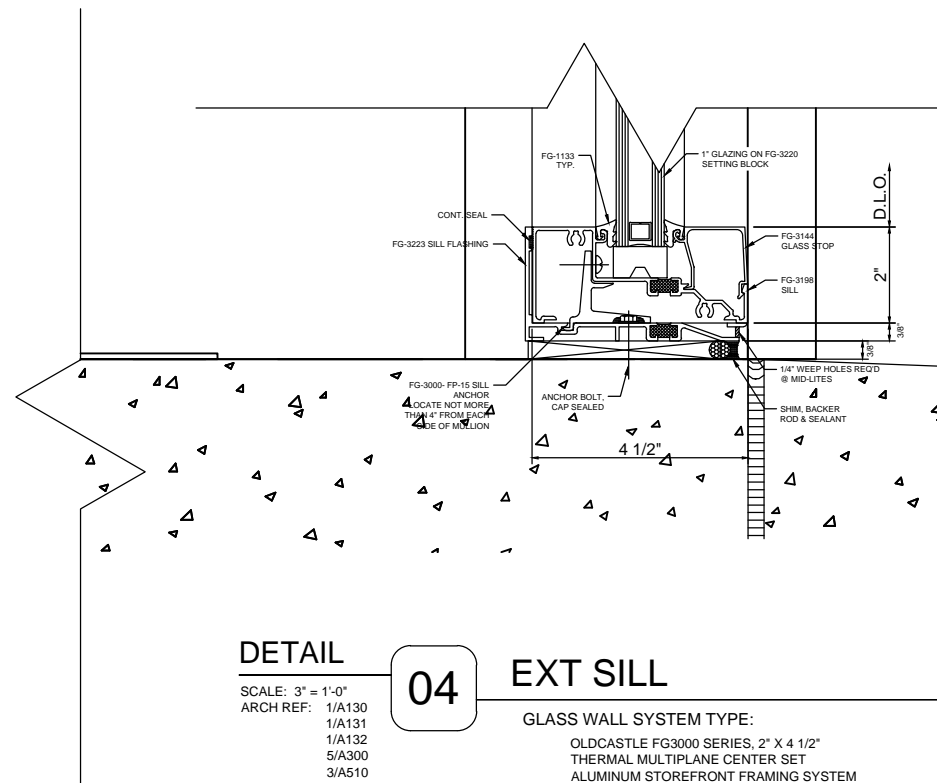
**03**

**EXT SILL**

SCALE: 3" = 1'-0"  
 ARCH REF: 1/A130  
 1/A131  
 1/A132  
 2/A300  
 5/A300  
 6/A510

**GLASS WALL SYSTEM TYPE:**

OLDCASTLE FG3000 SERIES, 2" X 4 1/2"  
 THERMAL MULTIPLANE CENTER SET  
 ALUMINUM STOREFRONT FRAMING SYSTEM



**DETAIL**

**04**

**EXT SILL**

SCALE: 3" = 1'-0"  
 ARCH REF: 1/A130  
 1/A131  
 1/A132  
 5/A300  
 3/A510

**GLASS WALL SYSTEM TYPE:**

OLDCASTLE FG3000 SERIES, 2" X 4 1/2"  
 THERMAL MULTIPLANE CENTER SET  
 ALUMINUM STOREFRONT FRAMING SYSTEM

NO.	DATE	BY	DESCRIPTION
2	04/15/20	fp	Corrections to First Submittal
2	04/14/20	fp	Revision to Plans, Elev., & Details for Updated Plans
1	04/12/20	fp	First Submittal

**SIX FLAGS GLASS**

108 E AIRLINE RD VICTORIA, TX 77901  
 (W) 361-573-9612 (F) 361-573-2334

PROJECT: VICTORIA MEDICAL OFFICE BUILDING (MOB)  
**NEW SHELL BUILDING**  
 ARCHITECT: GOREE ARCHITECTS  
 (713) 660-6102  
 GENERAL CONTRACTOR: WEAVER & JACOBS CONSTRUCTORS, INC.  
 (801) 277-9500

PROJECT NO. <b>SFG-1904-06</b>	
DRAWN BY <b>fp</b>	DATE <b>04/15/20</b>
SCALE <b>3" = 1'-0"</b>	
DRAWING <b>DETAILS</b>	
SHEET <b>D1</b>	